

CQD18S2

Electric Stand-on Reach Truck

1800kg



- Fully AC-powered system delivering smoother and more stable control for efficient and precise operation
- 695mm reach distance for great adaptability in diverse environments
- Integrated floating suspension system enhances stability when loading or at tight turns
- Electric powering steering and optimized brake system for added safety and reliability
- Silent screw pump and mast cushioning function for fatigue-free driving experience
- Easy battery removal through mast-assisted extraction for quick maintenance

Manufacturer			FORX
Model designation			CQD18S2
Drive			Electric
Load capacity	Q	kg	1800
Load center distance	c	mm	500
Service weight		kg	2760
Retracted mast height	h1	mm	2595
Lift height	h3	mm	6000
Height, mast extended	h4	mm	7030
Length to face of forks	l2	mm	1245
Overall width	b1/b2	mm	1090/1170
Fork dimensions	s/e/l	mm	40/100/920
Turning radius	Wa	%	1760
Travel speed, laden/unladen		km/h	9.5/10.5
Lifting speed, laden/unladen		m/s	0.30/0.50
Lowering speed, laden/unladen		m/s	0.54/0.50
Max. gradeability, laden/unladen		V/Ah	10/15
Drive motor rating S2 60 min			4.3
Battery voltage/nominal capacity			48/300/375

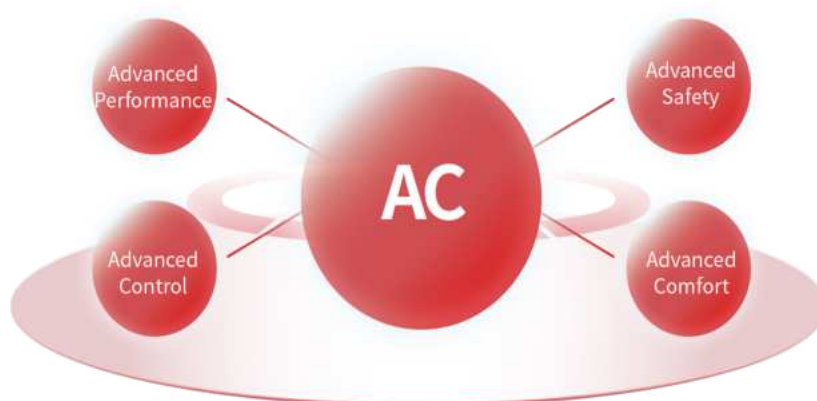
High Performance and Efficiency

Advanced Full-AC Motor System

The CQD18S2 is equipped with a fully AC-powered motor system, comprising a 4.3 kW drive motor and a 9.0 kW lift motor. The system is designed to deliver high output with improved energy efficiency, more accurate control and reduced maintenance requirements.

It brings:

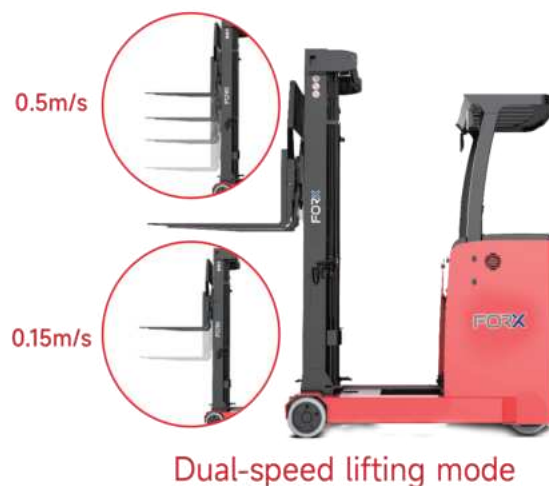
- Smart power response system simplifies the control.
- High-torque output supports stronger loading performance.
- Energy-efficient AC motor design reduces consumption and boosts uptime.
- Multiple drive settings adapting to different tasks and environments.
- Regenerative braking helps save energy and extend battery runtime.



Compared to the previous generation CQD15S

- ↓ The upgraded lift motor power reduces operating force by **40%**, providing smoother and more stable control.
- ↑ With lifting and lowering speeds of up to 0.5m/s, the CQD18S2 offers a **25%** productivity improvement over the CQD15S.
- ↑ It easily handles demanding ramps with a maximum gradeability of 15%, improved by **15%** thanks to the reliable 3-stage transmission.

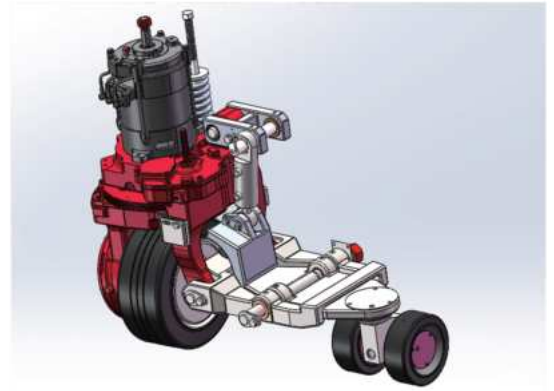
Besides, the CQD18S2 offers the dual-speed lifting mode for flexible stacking requirements.



▣ Safety and Stability Assurance

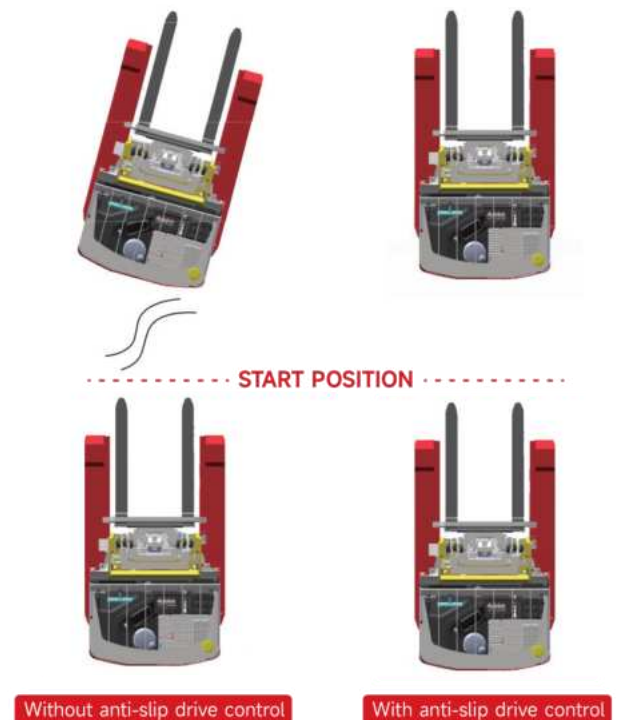
■ Floating Suspension System for Precision Control

The CQD18S2 is equipped with an integrated floating suspension system, which can precisely calibrate lock points. It maintains stability across a wide range of conditions—from routine daily operations to demanding scenarios such as sharp turns, steep ramps, or lifting heavy loads to high positions. This optimization enhances safety and more accurate control with every maneuver.



■ Smart Anti-Slip Traction Drive Control System

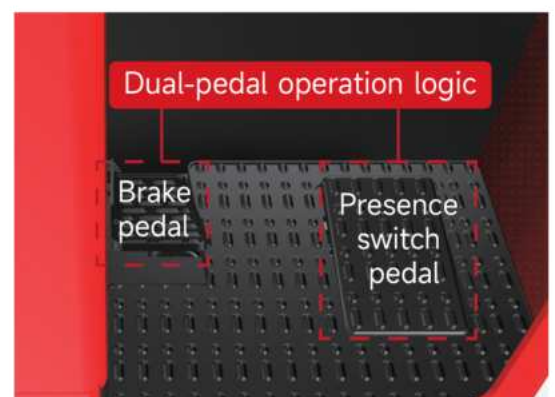
Equipped with a smart anti-slip drive control system, the CQD18S2 continuously detects surface adhesion and automatically adjusts traction force output. It ensures solid grip during sudden acceleration, sharp turning, or operation on wet ramps without throttle adjustment manually. The truck is effectively protected from wheel spin, slip, or potential tip-over even during high-load operations.



■ OPS and Dual-Circuit Safety Pedal for Enhanced Protection

To enforce safe start-up, the CQD18S2 is equipped with OPS: the dual-pedal operation logic requires operator pressing both brake and presence switch pedals before truck activation.

The dual-circuit safety pedal controls both travel and hydraulic functions and features anti-slip surface for operator foot stability.



Smart Energy Management & Ergonomic Design

Tri-Mode Energy Management with Energy Regeneration

The CQD18S2 offers 3 adaptive modes - E (Energy-saving), S (Standard), and P (Power) to better allocate power dynamically. It allows operators to adapt truck performance to different workload intensities and reduce energy consumption.

In addition, the integrated regenerative braking system captures kinetic energy during deceleration or braking phases and converts it into stored energy, further extending battery runtime.



Silent & Smooth Operation

The CQD18S2 incorporates a low-noise screw pump which provides the operator silent stacking and retrieving experience. Mast cushioning function in lifting and reach movements ensures gentle operation, especially when loading fragile and heavy goods.



User-Centered Cabin Design

The cabin is designed for fatigue-free operation with a lowered platform for operator easy access in and out. Also with semi-surrounding protection, soft backrest, and dual assist grips to ensure stability even during acceleration.



35% Enhanced Visibility

The angled overhead guard and crossbeam, along with neatly aligned hoses and chains, improve visibility by 35% compared to the CQD15S—boosting both safety and productivity.



Easy mast-assisted extraction for quick battery maintenance or replacement.



Cold Storage Option

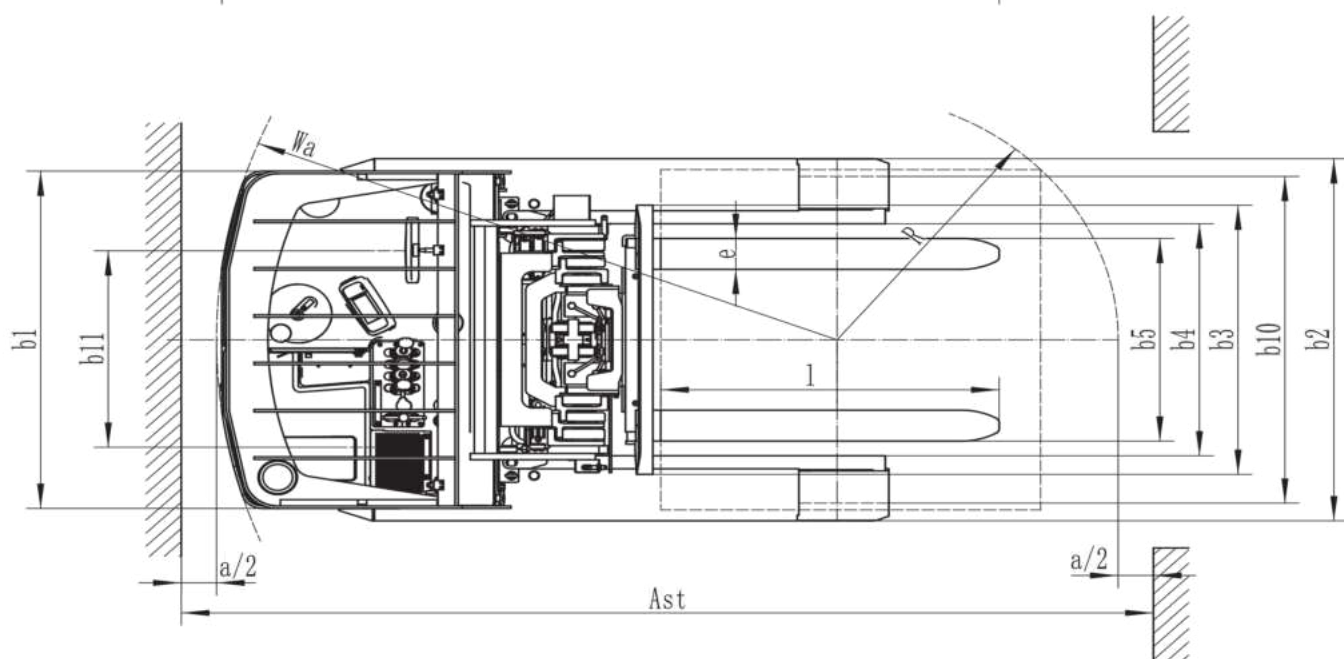
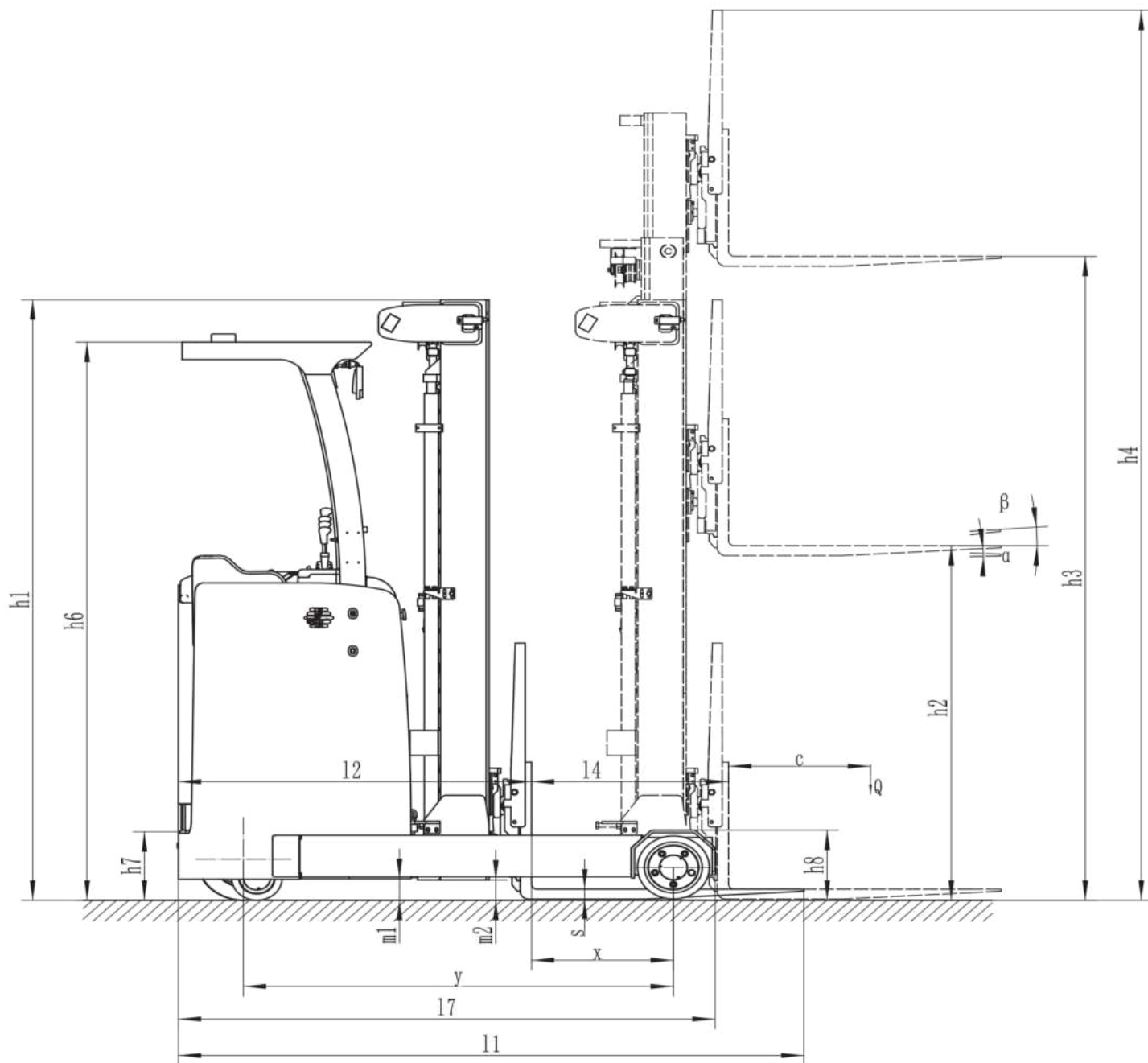
Electric Stand-on Reach Truck 1800kg

CQD18S2

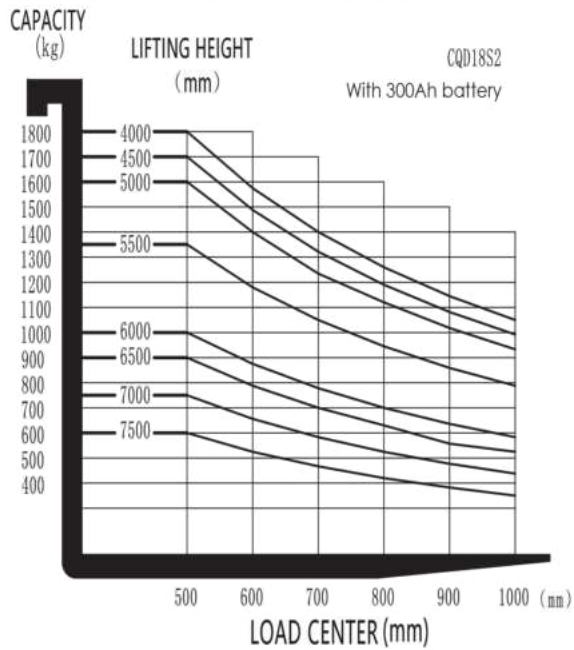
Distinguishing mark	1.1	Manufacturer			FORX
	1.2	Model designation			CQD18S2
	1.3	Drive			Electric
	1.4	Operator type			Stand-on
	1.5	Load capacity	Q	kg	1800
Weight	1.6	Load center distance	c	mm	500
	1.8	Load distance, centre of drive axle to fork	x	mm	500
	1.9	Wheelbase	y	mm	1515
	2.1	Service weight		kg	2760
Types, Chassis	2.3.2	Axle loading, unladen front/rear		kg	900/1820
	2.4.2	Axle loading, fork advanced, laden front/rear		kg	4180/480
	2.5.2	Axle loading, fork retracted, laden front/rear		kg	2900/1720
	3.1	Tyre type			Solid rubber/Polyurethane
	3.2.2	Tyre size, front		mm	254×114
Dimensions	3.3.2	Tyre size, rear		mm	330×140
	3.4	Additional wheels (castor wheels)		mm	178×73
	3.5.2	Wheels, number front/rear (x=drive wheels)			1x/2
	3.6.2	Tread width, front	b ₁₀	mm	1055
	3.7.2	Tread width, rear	b ₁₁	mm	635
	4.1	Tilt of mast/fork carriage forward/backward	α/β	°	2/4
	4.2	Retracted mast height	h ₁	mm	2595
	4.3	Free lift	h ₂	mm	1610
	4.4	Lift height	h ₃	mm	6000
	4.5	Height, mast extended	h ₄	mm	7030
	4.7	Height of overhead guard (cabin)	h ₆	mm	2240
	4.8	Seat height/standing height	h ₇	mm	275
	4.10	Height of wheel arms	h ₈	mm	280
	4.19	Overall length	l ₁	mm	2160
	4.20	Length to face of forks	l ₂	mm	1245
	4.21	Overall width	b ₁ /b ₂	mm	1090/1170
	4.22	Fork dimensions	s×e×l	mm	40/100/920
	4.23	A,B Fork carriage class/type A, B			2A
	4.24	Fork carriage width	b ₃	mm	870
	4.25	Fork spread	b ₃	mm	200/655
	4.26	Distance between wheel arms/loading surfaces	b ₄	mm	750
	4.28	Reach distance	l ₄	mm	695
	4.31	Ground clearance, laden, below mast	m ₁	mm	80
	4.32	Ground clearance, center of wheelbase	m ₂	mm	80
	4.34.1	Aisle width for pallets 1000×1200 crossways	Ast	mm	2740
	4.34.2	Aisle width for pallets 800×1200 lengthways	Ast	mm	2765
	4.35	Turning radius	Wa	mm	1760
	4.37	Length across wheel arms	l ₇	mm	1895
Performance data	5.1	Travel speed, laden/unladen		km/h	9.5/10.5
	5.2	Lifting speed, laden/unladen		m/s	0.30/0.50
	5.3	Lowering speed, laden/unladen		m/s	0.54/0.50
	5.4	Reaching speed, laden /unladen		m/s	0.2
	5.8	Max. gradeability, laden/unladen		%	10/15
	5.10	Service brake			Electric/Mechanical
Electric-engine	5.11	Parking brake			Mechanical
	6.1	Drive motor rating S2 60 min		kW	4.3
	6.2	Lift motor rating at S3 15%		kW	9
	6.4	Battery voltage/nominal capacity		V/Ah	48/300/375
	6.5	Battery weight		kg	495/605
Addition data	8.1	Type of drive control			AC
	10.5	Steering design			Electric
	10.7	Sound pressure level at the driver's ear		dB(A)	70
	15.1	Charger output current		A	40

The use of a battery with a capacity greater than 300Ah will result in increased I2* and Ast* values.

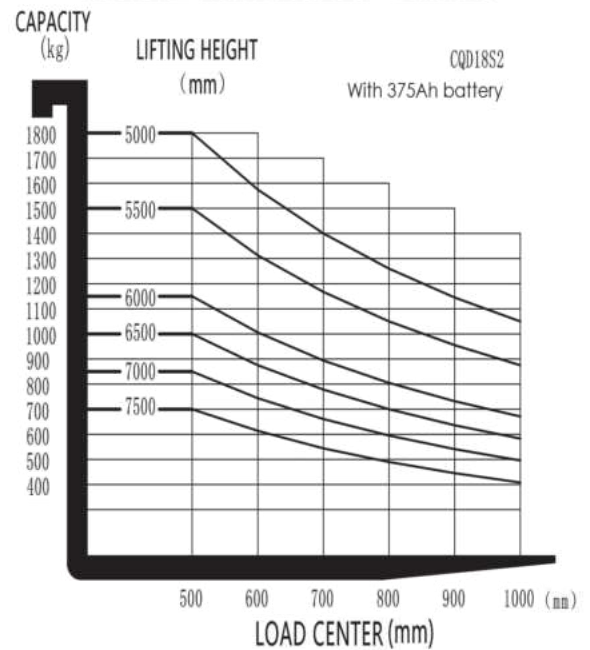
If there are improvements of technical parameters or configurations, no further notice will be given.
The diagram shown may contain non-standard configurations.



RATED CAPACITIES GRAPH



RATED CAPACITIES GRAPH



Mast Option

Mast types	Lift height (h3)	Height, Mast			Height, Free lift(h2)	
		Height, mast lowered(h1)	Height, mast extended(h4)		No backrest	With backrest
			No backrest	With backrest		
	mm	mm	mm	mm	mm	mm
2-Wide Mast	2500	1745	3025	3530	410	410
	2700	1845	3225	3730	410	410
	3000	1995	3525	4030	410	410
	3300	2145	3825	4330	410	410
	3500	2245	4025	4530	410	410
	3700	2345	4225	4730	410	410
	4000	2495	4525	5030	410	410
	4300	2745	4925	5430	410	410
	4500	2845	5125	5630	410	410
	4700	2945	5325	5830	410	410
	5000	3095	5625	6130	410	410
3-Free Mast	4000	1895	4565	5030	1388	910
	4500	2065	5065	5530	1558	1080
	5000	2245	5565	6030	1738	1260
	5500	2410	6065	6530	1898	1420
	6000	2595	6565	7030	2088	1610
	6500	2760	7065	7530	2248	1770
	7000	2945	7565	8030	2438	1960
	7500	3115	8065	8530	2608	2130

Option

Optional items	CQD18S2
Fork dimension	<ul style="list-style-type: none"> ○No●900*600、2A、100*40*920○900*600、2A、100*40*1070 ○900*600、2A、100*40*1150○900*600、2A、100*40*1220 ○900*600、2A、100*40*1370
Reach lift truck Leg width	●750mm
Fork carriage width	●870mm
Load backrest height	●990mm
Load wheel type	●Single
Load wheel material	●PU
Drive wheel material	●Solid rubber
Battery capacity	○No○48V/300Ah Lead-acid○48V/375Ah Lead-acid
Charger	○48V-40A External○48V-50A External○No
Attachments	●No ○Built-in sideshifter
Castor wheels	●Yes and not customized
Front lamp	●LED
Rear lamp	●No○LED
Warning lamp	●Yes and not customized
Blue lamp	●No○Yes and not customized
Area warning lamp	●No○Yes and not customized
Rearview mirror	●Yes
Buzzer	●Yes○Yes and customized
Camera	●No○Yes and not customized
Fire extinguisher	●No○Yes and not customized
OPS system	●Yes and not customized
USB interface	●No○Yes and not customized
Telematics	●Yes and not customized○No
Turn speed control	●Yes and not customized
Operator identification device	●No○Card reader
Battery side pull function	●No○Yes and not customized
Cold storage	●No○Yes and not customized
Forks tilt forward and backward	●Yes and not customized
Overhead guard	●Yes○Driver-in
Hydraulic operating system	●Mechanical lever
Battery side pull attachment	●No○Yes and not customized
Note: ●Standard ○ Optional - Inconformity	