

FORX

ENERGY ADVANCE CO., LTD

77/7 SOI SUWINTHAWONG 33, LUMPAKCHEE,
NONG CHOK , BANGKOK 10530

SERVICE@ENERGYADVANCE.CO.TH
WWW.FORX.CO.TH
TEL. 02-543-7289



LINE OA : @FORX



XE SERIES

ELECTRIC FORKLIFT TRUCK WITH
LITHIUM POWER

With capacity of 1,500 to 3,800kg

XE SERIES



TAKE ON THE BIG JOBS.

Following the family design of electric forklifts, they are provided with some key parts compatible with internal combustion forklifts, and optimized mainly on the overall performance, ergonomics, reliability, maintenance, outdoor operation ability and load capacity in a bid to meet customers' use scenarios of internal combustion forklifts. The enhanced model is capable of meeting the application demand of users in heavy-duty working conditions.

STYLISH EXTERIOR

- Following the family exterior design of XH and XC lithium battery forklifts;
- Boasting smooth and powerful contour lines, and simple and elegant vehicle body, and presenting both fashion and steadiness as a whole.

ENERGY-SAVING AND EFFICIENT

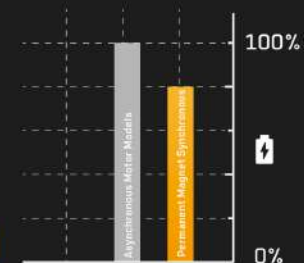
- An efficient high-torque motor together with a high speed ratio gearbox significantly improves the travel speed, gradeability and lifting speed;
- The air-cooled fan built in the travel and lifting motors allow better heat dissipation and more thorough performance realization;
- Oil pump reducers are introduced in the oil pump devices for the first time, enabling the lifting motor to work in a more efficient and more energy-saving manner;



TAKE ADVANTAGE OF MORE POWER

With the **80V dual permanent magnet synchronous motor system** with higher power density, as well as the highly fitted speed reducer, motors and electrical control, under the same operating conditions, compared with the traditional asynchronous motor model, the energy consumption is reduced by 15%-20%.

**15-20%
ENERGY SAVING**





ADAPTABILITY TO DIFFERENT SCENARIOS

1

Smooth driving: Increased distance from the ground enables the forklift to adapt to rugged roads outdoors.

2

Turning radius
2035-2350mm

Flexible turning: With a small turning radius, the forklift can flexibly move in indoor environments such as cold stores (optional), etc.

3

Adaptability to cold weather: For the standard configuration, the battery is equipped with an electric heating module to ensure normal operation in cold weather.

4

Adaptability to rain: The protection level of the vehicle reaches level IPX4, so it can easily resist rainstorms.

COMFORTABLE EXPERIENCE

- With the advantages of lithium battery forklifts, this ergonomically designed forklift enables a wide view and a large operation space.
- The optional electronic handbrake allows more comfortable driving experience.
- The color-screen instruments are designed to have clear and intuitive graphic interfaces.



Color-screen instruments

Ergonomically designed forklift enables a wide view



RELIABLE AND DURABLE

- The enhanced drive axle and gearbox with the mast, steering axles with tapered roller bearing (for the heavy-duty model) and big tires for internal combustion forklifts can meet the demand of application in heavy-duty working conditions;
- Low center of gravity and high load margin are designed for more stable working;
- Verified in accordance with double standards of electric forklifts and internal combustion forklifts, with the enhanced test strength higher than that for the internal combustion standard, this forklift is reliable and durable.



Ground clearance increased



MOBILE SOLUTION PROVIDER & MOBILE APPLICATION

KEEP AN EYE ON EVERYTHING

Hangcha FIMS is a system that provides you with real-time information about forklift truck and driver. Whether you have dozens or hundreds of forklift trucks across multiple sites, you can get access to collecting, monitoring and evaluating all the fleet data at anytime and anywhere.

» Features

- ▶ Access Control
- ▶ GPS Tracking
- ▶ Remote Monitoring
- ▶ Maintenance Reminder
- ▶ Vehicle Management
- ▶ Vibration Monitoring
- ▶ Pre-shift Check (Optional)
- ▶ Shift Management (Optional)
- ▶ OpenAPI (Optional)

LITHIUM POWERED

EMPOWER YOURSELF
WITH THE BEST



Li
Lithium

POWER THE POSSIBILITIES
RELIABLE LITHIUM-ION TECHNOLOGY

LITHIUM BATTERY ADVANTAGES



Long service life

4000 full charging cycles with at least 75% residual capacity.



Return on investment

Add flexibility to your operation, cost-saving in the long term, increased efficiencies.



Maintenance free

No topping up of water or checking acid levels.



High energy density

The high energy density of the Li-Ion battery ensures long working times and increases the high availability.



Cold area application

Li-Ion batteries maintain high performance at temperatures below freezing.



High safety and reliability

Intelligent battery management monitoring every important function, no emission of battery gasses.



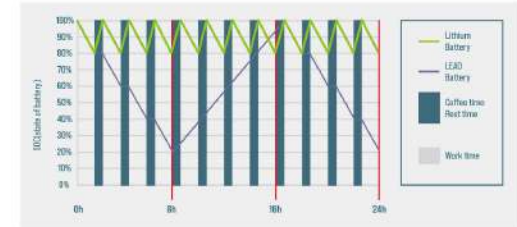
Opportunity charging

Full performance during several shifts thanks to effective interim charging.

FEATURES & BENEFITS THE DIFFERENCE

Efficiency

By quick opportunity charging any downtime, such as a lunch break, can be efficiently used and the battery is recharged in a very short period of time. Interim charging does not affect the battery service life.



Safety

- / Intelligent battery management monitoring every important function.
- / Higher user safety, thanks to acid-free use.
- / User friendly due to avoided battery change.
- / No emission of battery gasses.



QUESTION 1

Q: What are the characteristics of lithium batteries, especially when used in high and low temperature environments?

Charging temperature: -30°C - 65°C
Discharge temperature: -30°C - 65°C
Storage environment temperature: -30°C - 65°C

After the truck key switch is closed, the instrument battery condition needs to be checked:

1. Confirm that there is no battery system alarm message on the instrument panel.
2. Please check the remaining power before use. It is recommended to use the SOC between 50% and 100%.
3. If the SOC is lower than 20%, it is not recommended to continue using it. Please charge it as soon as possible.

QUESTION 2

Q: What is the charging time and usage time calculation of forklift lithium battery?

1. Available power of lithium battery [kWh] = rated voltage * rated power * 90% (To avoid over-discharge damaging the battery, the forklift is equipped with low power protection (less than 10%).)
2. Charging time [h] = rated capacity of lithium battery [Ah] * 90% / charger output current [A].
3. The power consumed for charging [kWh] = the available power of the lithium battery * 93% (the charging efficiency of the charger is calculated as 93%).
4. Usage time [h] = available power of lithium battery * energy consumption data.

For specific energy consumption values, please refer to the technical table on the sharing platform.

QUESTION 3

Q: How does Hangcha BMS work to ensure the safety of the lithium battery?

HANGCHA BMS (battery management system) can monitor the cells at all time. As a result, hangcha lithium power is the reliable solution.



Battery Safety Management:

- Overcharge / over discharge protection
- Overcurrent / over-temperature / low-temperature protection
- Multi-level fault diagnosis protection
- Double fault monitoring



Battery Parameter Detection:

- Battery voltage detection and analysis
- Battery current detection and analysis
- Battery temperature detection and analysis



Equilibrium Management:

- Equalization based on voltage mode
- Equalization based on time mode
- Equalization based on battery cell SOC
- Active/passive equalization optional



Other Features:

- Low cost, low power consumption
- Historical data record
- Flexible cascade expansion
- CRC data validation

LI-ION BATTERIES AND CHARGERS

IT'S FASTER AND EASIER

Innovative, reliable lithium-ion technology (Lithium Iron-Phosphate), which are developed jointly by HANGCHA and CATL. Battery cells and modules are from CATL, with reliable quality, exclusively for HANGCHA.



Battery Capacity(Standard)
80V/150-460Ah

Battery weight:150-310kg

**6 YEARS
WARRANTY**

WARRANTY SERVICE

Integrated Battery Management System (BMS) continually monitors energy management and ensures reliable operation. HANGCHA provides Li-Ion battery (LiFePO4) with **6 years** or **12000 hours** warranty.

External charger



On-board charger



The on-board charger features adaptive single-phase or three-phase capability, widely compatible with various grid standards to flexibly meet diverse customer requirements.

EVE Battery Capacity

Capacity(Ah)	1.5-2.0t 80V		2.0-2.5t 80V		3.0-3.8t 80V	
	HA		HA	H2	HA	H2
150	●	/	/	/	/	/
230	○	/	●	/	●	/
304	○	○	○	●	○	/
460	/	○	○	○	○	●
560	/	/	/	/	○	○
608	/	/	/	/	/	○

Note: ● Standard ; ○ Optional

CATL Battery Capacity

Capacity(Ah)	1.5-2.0t 80V		2.0-2.5t 80V		3.0-3.8t 80V	
	HA		HA	H2	HA	H2
228	○	/	/	/	/	/
302	○	○	○	○	○	/
456	/	○	○	○	○	○
604	/	/	/	/	○	○

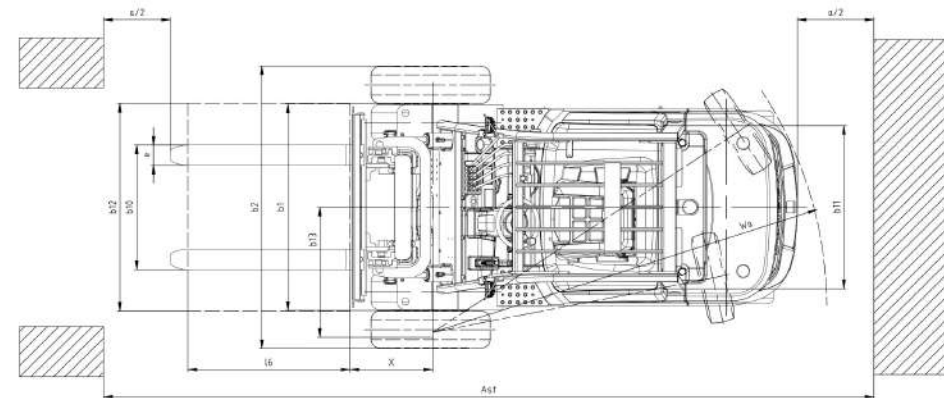
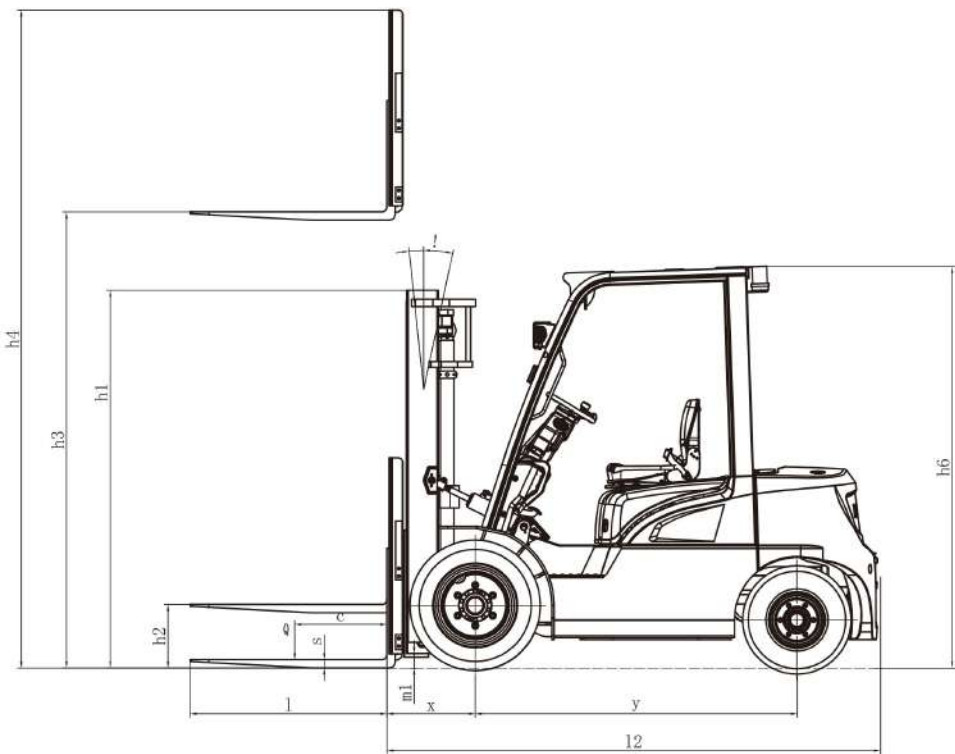
Note: ● Standard ; ○ Optional

Features

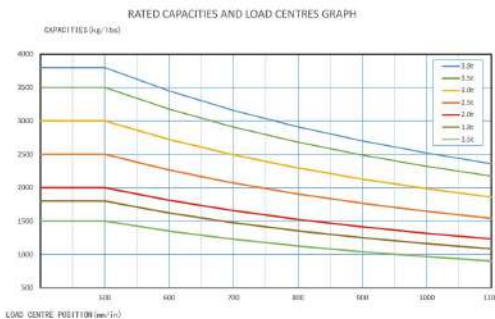
	Standard	Options
Color		
Yellow-black	●	
Other customized color		○
Particular market		
CE Standard		○
Cold storage environment		
-30°C		○
Mast		
Standard duplex mast	●	
Configuration Table of the Mast		○
Fork and attachment		
Standard fork	●	
Fork arm carrier	●	
Load backrest	●	
Non-standard series fork		○
Various attachments		○
Tires		
Pneumatic tire (single)	●	
Pneumatic tire (dual)		○
Solid tire (single)		○
Solid tire (dual)		○
Multiway valve		
Double multi-way valve	●	
Potentionmeter for lift	●	
3rd vavle		○
4th vavle		○
5th vavle (2.0-3.8t)		○
Tiller		
Lifting and tilting level	●	
Fingertip system		○
Battery		
Standard lithium battery	●	
Large-capacity lithium battery		○
Quick-change lithium battery		○
On-board charger		○
Light		
LED head lamp	●	
Turn signal lamp	●	
LED rear combination lamp	●	
Common alarm lamp		○
Acoustic and optical alarm lamp		○
LED rear lamp		○
Blue light		○
Straight projection lamp		○
Horn		
Electric horn	●	
Reverse buzzer	●	
Right rear armrest with horn button		○
Smart module		
FIMS(Fleet intelligent management system)		○

Features

	Standard	Options
Safety configuration		
Emergency power-off switch	●	
Fuse box	●	
Soft landing (Only for the wide view duplex mast)	●	
Reversing radar		○
DPS system		○
Fire extinguisher		○
Ascending buffering		○
Parking brake		
Mechanical handbrake	●	
EPB(Electric Parking Brake)		○
Instrument rack space		
Smart color-screen instrument (speed mode selection)	●	
Combination switch	●	
Cigarette lighter		○
USB port		○
Electronic code lock (start by swiping a card)		○
Driving space		
Standard overhead guard	●	
Central rear view mirror	●	
Front windshield		○
PVC ceiling		○
Cab		○
Electric fan		○
Left and right rear view mirrors		○
Seat		
Standard seat	●	
Fully-suspended seat		○
Semi-suspended seat		○
Other standard configuration		
Drive and lifting controllers	●	
Driving and lifting motors	●	
Silent gear pump	●	
DC-DC converter	●	
Pedal pad	●	
Traction pin	●	
Integral stamped side panel and hood	●	



$AST = a + W_0 + x + B$ a: Clearance (200mm)



1.5-mini2.0t(HA) Mast specification

Type	Model			Lifting height	Lowered overall height		Overall height				Free lift height				Tilt range FWD/RWD	Capacity [Mast vertical to ground]					
					1.5/1.8t		1.5/1.8t		With backrest		Without backrest		1.5/1.8t			1.5/1.8t		Load Capacity at 500mm			
					1.5t	1.8t	1.5t	1.8t	1.5t	1.8t	1.5t	1.8t	1.5t	1.8t		1.5t	1.8t	mini2.0t	1.5t	1.8t	mini2.0t
Duplex wide view mast	A2A15M200	A2A18M200	XEX20M200	2000	1495	1495	2548	2504	2955	2955	155	160	155	160	6/8	1500	1800	2000	1500	1800	2000
	A2A15M250	A2A18M250	XEX20M250	2500	1745	1745	3048	3004	3455	3455	155	160	155	160	6/12	1500	1800	2000	1500	1800	2000
	A2A15M270	A2A18M270	XEX20M270	2700	1845	1845	3248	3204	3655	3655	155	160	155	160	6/12	1500	1800	2000	1500	1800	2000
	A2A15M300	A2A18M300	XEX20M300	3000	1995	1995	3548	3504	3955	3955	155	160	155	160	6/12	1500	1800	2000	1500	1800	2000
	A2A15M330	A2A18M330	XEX20M330	3300	2145	2145	3848	3804	4255	4255	155	160	155	160	6/12	1500	1800	2000	1500	1800	2000
	A2A15M360	A2A18M360	XEX20M360	3600	2345	2345	4148	4104	4555	4555	155	160	155	160	6/12	1500	1800	2000	1500	1800	2000
	A2A15M400	A2A18M400	XEX20M400	4000	2595	2595	4548	4504	4955	4955	155	160	155	160	6/8	1500	1800	2000	1500	1800	2000
	A2A15M430	A2A18M430	XEX20M430	4300	2745	2745	4848	4804	5255	5255	155	160	155	160	6/8	1500	1700	1850	1500	1750	2000
	A2A15M450	A2A18M450	XEX20M450	4500	2845	2845	5048	5004	5455	5455	155	160	155	160	6/8	1500	1850	1850	1500	1700	1900
	A2A15M480	A2A18M480	XEX20M480	4800	2995	2995	5348	5304	5755	5755	155	160	155	160	6/6	1400	1600	1750	1500	1650	1850
A2A15M500	A2A18M500	XEX20M500	5000	3095	3095	5548	5504	5955	5955	155	160	155	160	6/6	1350	1550	1650	1400	1600	1750	
A2A15L250	A2A18L250	XEX20L250	2500	1760	1745	3074	3060	3445	3445	1185	1185	815	800	6/12	1500	1800	2000	1500	1800	2000	
A2A15L270	A2A18L270	XEX20L270	2700	1860	1845	3274	3260	3645	3645	1285	1285	915	900	6/12	1500	1800	2000	1500	1800	2000	
A2A15L300	A2A18L300	XEX20L300	3000	2010	1995	3574	3560	3945	3945	1495	1495	1065	1050	6/12	1500	1800	2000	1500	1800	2000	
A2A15L330	A2A18L330	XEX20L330	3300	2160	2145	3874	3860	4245	4245	1585	1585	1215	1200	6/12	1500	1800	2000	1500	1800	2000	
A2A15L360	A2A18L360	XEX20L360	3600	2310	2295	4174	4160	4545	4545	1735	1735	1365	1350	6/12	1500	1800	2000	1500	1800	2000	
A2A15L400	A2A18L400	XEX20L400	4000	2560	2545	4574	4560	4945	4945	1985	1985	1615	1600	6/12	1500	1800	2000	1500	1800	2000	
A2A15M400	A2A18M400	XEX20M400	4000	1960	1945	4694	4655	4955	4955	1276	1392	1015	1000	6/6	1500	1800	1950	1500	1800	2000	
A2A15M430	A2A18M430	XEX20M430	4300	2060	2045	4994	4955	5255	5255	1376	1492	1115	1100	6/6	1500	1650	1850	1500	1800	1950	
A2A15M450	A2A18M450	XEX20M450	4500	2110	2095	5194	5037	5455	5455	1426	1542	1165	1150	6/6	1500	1650	1800	1500	1750	1900	
A2A15M470	A2A18M470	XEX20M470	4700	2210	2195	5394	5237	5655	5655	1526	1642	1265	1250	6/8	1400	1600	1750	1500	1650	1850	
A2A15M480	A2A18M480	XEX20M480	4800	2260	2195	5494	5337	5755	5755	1576	1642	1315	1250	6/8	1400	1600	1750	1500	1650	1850	
A2A15M500	A2A18M500	XEX20M500	5000	2360	2295	5694	5537	5955	5955	1676	1742	1415	1350	6/8	1400	1550	1700	1450	1600	1800	
A2A15M550	A2A18M550	XEX20M550	5500	2560	2445	6194	6037	6455	6455	1876	1892	1615	1500	3/6	1250	1500	1650	1350	1550	1750	
A2A15M600	A2A18M600	XEX20M600	6000	2810	2645	6694	6537	6955	6955	2126	2092	1865	1700	3/6	1100	1300	1450	1150	1400	1500	

SUBTRACT 100kg WITH INTEGRAL SIDESHIFTER SUBTRACT 150kg WITH EXTERNAL SIDESHIFTER.

2-2.5t(H2) Mast specification

Type	Model	Lifting height mm	Lowered overall height mm	Overall height		Free lift height		Tilt range FWD/RWD [°]	Capacity (Mast vertical to ground)					
				Without backrest mm	With backrest mm	Without backrest mm	With backrest mm		Load Capacity at 500mm					
									Single Tire		Double tire			
				2t	2.5t	2t	2.5t		kg	kg	kg	kg		
Duplex wide view mast	XR25M200	2000	1534	2707	3046	180	180	6/6	2000	2500	2000	2500		
	XR25M250	2500	1784	3207	3546	180	180	6/12	2000	2500	2000	2500		
	XR25M270	2700	1894	3407	3746	180	180	6/12	2000	2500	2000	2500		
	XR25M300	3000	2034	3707	4046	180	180	6/12	2000	2500	2000	2500		
	XR25M330	3300	2184	4007	4346	180	180	6/12	2000	2500	2000	2500		
	XR25M360	3600	2385	4307	4646	180	180	6/12	2000	2500	2000	2500		
	XR25M400	4000	2635	4707	5046	180	180	6/6	2000	2500	2000	2500		
	XR25M430	4300	2785	5007	5346	180	180	6/6	2000	2500	2000	2500		
	XR25M450	4500	2885	5207	5546	180	180	6/6	2000	2450	2000	2500		
	XR25M480	4800	3035	5507	5846	180	180	6/6	1950	2350	2000	2450		
Duplex full-free mast	XR25M500	5000	3135	5707	6046	180	180	6/6	1850	2300	1950	2350		
	XR25M550	5500	3385	6207	6546	180	180	3/6	1750	2150	1800	2250		
	XR25M600	6000	3635	6707	7046	180	180	3/6	1550	1900	1800	2000		
	XR25U250	2500	1750	3179	3518	703	6/12	2000	2500	2000	2000			
	XR25U270	2700	1850	3379	3718	803	6/12	2000	2500	2000	2500			
	XR25U300	3000	2000	3679	4018	953	6/12	2000	2500	2000	2500			
	XR25U330	3300	2150	3979	4318	1103	6/12	2000	2500	2000	2500			
	XR25U360	3600	2300	4279	4618	1253	6/12	2000	2500	2000	2500			
	XR25U400	4000	2550	4679	5018	1503	6/12	2000	2500	2000	2500			
	XR25N400	4000	1950	4739	5078	1270	903	6/6	2000	2500	2000	2500		
Triplex full-free mast	XR25N430	4300	2050	5039	5378	1370	1003	6/6	2000	2450	2000	2500		
	XR25N450	4500	2100	5239	5578	1420	1053	6/6	2000	2350	2000	2450		
	XR25N470	4700	2200	5439	5778	1520	1153	6/6	1950	2250	2000	2350		
	XR25N480	4800	2200	5539	5878	1520	1153	6/6	1950	2250	2000	2350		
	XR25N500	5000	2300	5739	6078	1620	1253	6/6	1850	2150	1950	2250		
	XR25N550	5500	2450	6239	6578	1770	1403	3/6	1750	2050	1900	2100		
	XR25N600	6000	2600	6739	7078	1870	1503	3/6	1550	1850	1800	1950		
	XR25N650	6500	2850	7239	7578	2170	1803	3/6	/	/	1550	1800		
	XR25N700	7000	3100	7739	8078	2420	2053	3/6	/	/	1150	1450		

SUBTRACT 100kg WITH INTEGRAL SIDESHIFTER, SUBTRACT 150kg WITH EXTERNAL SIDESHIFTER.

3-3.8t(H2) Mast specification

Type	Model	Lifting height mm	Lowered overall height mm	Overall height				Free lift height				Tilt range FWD/RWD [°]	Capacity (Mast vertical to ground)											
				Without backrest		With backrest		Without backrest		With backrest			Load Capacity at 500mm											
				3t		3.5/3.8t		3t		3.5/3.8t			3t		3.5t		3.8t		3t		3.5t		3.8t	
				mm	mm	mm	mm	mm	mm	mm	mm		mm	mm	mm	mm	mm	mm	mm	mm	mm	mm	mm	mm
Duplex wide view mast	XR30M200	2000	1554	1669	2767	2842	3145	3145	165	170	165	170	6/6	3000	3500	3800	3000	3500	3800					
	XR30M250	2500	1804	1919	3267	3342	3645	3645	165	170	165	170	6/12	3000	3500	3800	3000	3500	3800					
	XR30M270	2700	1904	2019	3467	3542	3845	3845	165	170	165	170	6/12	3000	3500	3800	3000	3500	3800					
	XR30M300	3000	2054	2169	3767	3842	4145	4145	165	170	165	170	6/12	3000	3500	3800	3000	3500	3800					
	XR30M330	3300	2204	2319	4067	4142	4445	4445	165	170	165	170	6/12	3000	3500	3800	3000	3500	3800					
	XR30M360	3600	2404	2469	4367	4442	4745	4745	165	170	165	170	6/12	3000	3500	3800	3000	3500	3800					
	XR30M400	4000	2654	2769	4767	4842	5145	5145	165	170	165	170	6/12	3000	3500	3800	3000	3500	3800					
	XR30M430	4300	2804	2919	5067	5142	5445	5445	165	170	165	170	6/6	3000	3400	3700	3000	3500	3800					
	XR30M450	4500	2904	3019	5267	5342	5645	5645	165	170	165	170	6/6	3000	3300	3600	3000	3400	3700					
	XR30M500	5000	3154	3269	5767	5842	6145	6145	165	170	165	170	6/6	2950	3200	3500	3000	3300	3600					
Duplex full-free mast	XR30M550	5500	3404	3519	6267	6342	6645	6645	165	170	165	170	3/6	2670	3000	3300	2750	3100	3400					
	XR30M600	6000	3654	3769	6767	6842	7145	7145	165	170	165	170	3/6	2350	2650	2950	2500	2800	3100					
	XR30U250	2500	1834	1934	3316	3391	3645	3645	1018	1043	689	789	6/12	3000	3500	3800	3000	3500	3800					
	XR30U270	2700	1934	2034	3516	3591	3845	3845	1118	1143	769	869	6/12	3000	3500	3800	3000	3500	3800					
	XR30U300	3000	2084	2184	3816	3891	4145	4145	1268	1293	839	1039	6/12	3000	3500	3800	3000	3500	3800					
	XR30U330	3300	2234	2334	4116	4191	4445	4445	1418	1443	1089	1189	6/12	3000	3500	3800	3000	3500	3800					
	XR30U360	3600	2384	2484	4416	4491	4745	4745	1568	1593	1239	1339	6/12	3000	3500	3800	3000	3500	3800					
	XR30U400	4000	2634	2734	4816	4891	5145	5145	1818	1843	1489	1589	6/12	3000	3500	3800	3000	3500	3800					
	XR30N400	4000	2019	2119	4818	4891	5145	5145	1203	1228	874	974	6/6	3000	3400	3700	3000	3500	3800					
	Triplex full-free mast	XR30N430	4300	2119	2219	5118	5191	5445	5445	1303	1328	974	1074	6/6	3000	3300	3600	3000	3400	3700				
XR30N450		4500	2169	2219	5318	5391	5645	5645	1383	1428	1024	1124	6/6	3000	3200	3500	3000	3300	3600					
XR30N470		4700	2269	2419	5616	5691	5945	5945	1463	1528	1124	1274	6/6	2900	3100	3400	2950	3200	3500					
XR30N480		4800	2319	2469	5816	5891	6145	6145	1543	1608	1174	1324	6/6	2900	3100	3400	2950	3200	3500					
XR30N500		5000	2419	2519	6116	6191	6445	6445	1603	1728	1274	1474	6/6	2850	3100	3350	2900	3200	3450					
XR30N550		5500	2619	2869	6316	6391	6645	6645	1803	1978	1474	1724	3/6	2670	3000	3250	2750	3100	3350					
XR30N600		6000	2869	3119	6816	6891	7145	7145	2053	2200	1724	1974	3/6	2350	2650	2900	2500	2800	3050					
XR30N650		6500	3119	3369	7316	7391	7645	7645	2303	2478	1974	2224	3/6	/	/	/	2200	2400	2650					
XR30N700		7000	3369	3619	7816	7891	8145	8145	2553	2700	2274	2474	3/6	/	/	/	1850	2050	2250					

SUBTRACT 100kg WITH INTEGRAL SIDESHIFTER, SUBTRACT 200kg WITH EXTERNAL SIDESHIFTER.

3.5-3.8t can be equipped with 4.5m triplex mast for container work(±219mm).

2-2.5t(HA) Mast specification

Type	Model	Lifting height mm	Lowered overall height mm	Overall height		Free lift height		Tilt range FWD/RWD [°]	Capacity (Mast vertical to ground)					
				Without backrest mm	With backrest mm	Without backrest mm	With backrest mm		Load Capacity at 500mm					
									Single Tire		Double tire			
				2t	2.5t	2t	2.5t		kg	kg	kg	kg		
Duplex wide view mast	A2A25M200	2000	1499	2707	3046	180	180	6/6	2000	2500	2000	2500		
	A2A25M250	2500	1749	3207	3546	180	180	6/12	2000	2500	2000	2500		
	A2A25M270	2700	1849	3407	3746	180	180	6/12	2000	2500	2000	2500		
	A2A25M300	3000	1999	3707	4046	180	180	6/12	2000	2500	2000	2500		
	A2A25M330	3300	2149	4007	4346	180	180	6/12	2000	2500	2000	2500		
	A2A25M360	3600	2349	4307	4646	180	180	6/12	2000	2500	2000	2500		
	A2A25M400	4000	2599	4707	5046	180	180	6/6	2000	2500	2000	2500		
	A2A25M43													