




CQD15S

ELECTRIC STAND-UP REACH TRUCK 1.5T

 1500 kg
  7500 mm
  48 V Li-Ion/AGM



The CQD15S is ideal for warehouses, logistics hubs, and distribution centers with narrow aisles and high racking systems. It ensures precise and efficient stacking even in confined spaces, supported by a non-floating drive system that enhances stability at high lifting positions. Its stand-up design improves visibility and maneuverability, making it a strong choice for operations where space utilization and operator efficiency are critical.

SPECIFICATION	REF	UNIT	VALUE
Battery type			Li-Ion/AGM
Battery nominal capacity K5		Ah	420
Battery voltage		V	48
Rated capacity	Q	kg	1500
Load centre distance	c	mm	600
Service weight		kg	2370
Height, mast lowered	h_1	mm	2050
Lift	h_3	mm	3000
Height, mast extended	h_4	mm	3860
Overall length	l_1	mm	2335
Overall width	b_1/b_2	mm	1090
Length to face of forks	l_2	mm	1265
Fork dimensions	s/e/l	mm	40/100/1070
Turning radius	Wa	mm	1765
Manufacturer			CQD15S
Model designation			FORX

Features

Compact stand-up design

The stand-on configuration provides operators with a wider view and excellent maneuverability, enabling safe and efficient stacking in narrow aisles and high racking environments.



Stable and precise lifting

With lift heights up to 7.5 meters and a rated capacity of 1.5 tons, the CQD15S maintains stability through its non-floating drive system, ensuring consistent performance at maximum height.

High-quality global components

Equipped with premium parts such as a USA KDS motor, Japan Shimadzu pump, Italy ZAPI controller, and USA AMP connectors, the CQD15S guarantees reliability, long service life, and smooth performance in intensive applications.



Efficient Li-ion ready power system

Powered by a 48V/420Ah battery (with optional capacities up to 465Ah or Li-ion packs), the CQD15S supports long shifts, quick recharging, and reduced maintenance. This ensures flexibility and efficiency in demanding multi-shift operations.

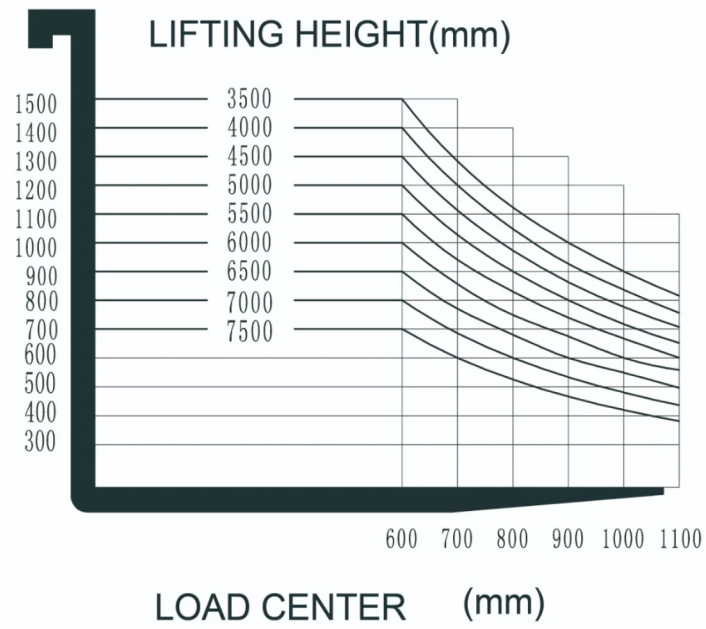
VDI Chart

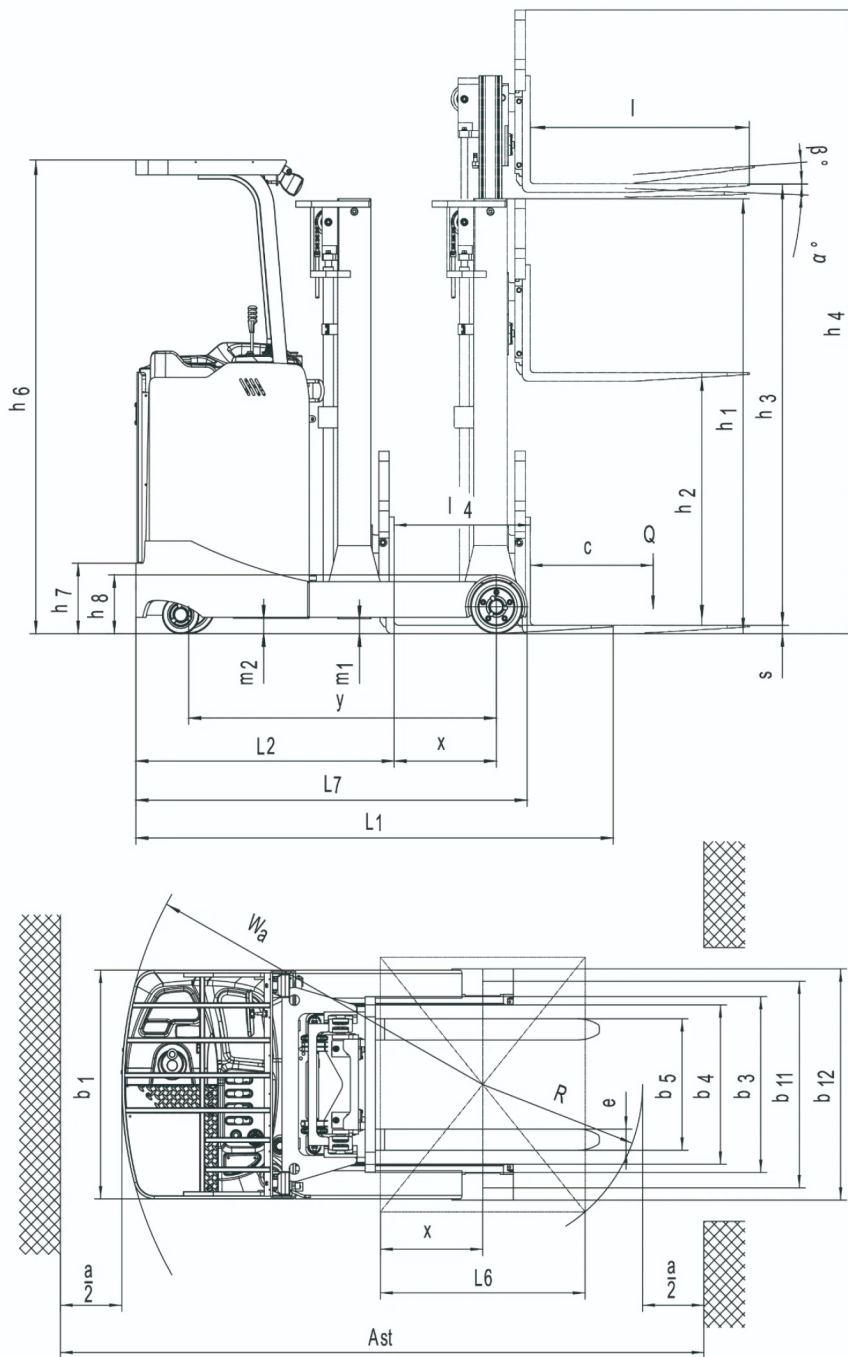
	SPECIFICATION	REF	UNIT	VALUE
1.1	Manufacturer			CQD15S
1.2	Model designation			FORX

	SPECIFICATION	REF	UNIT	VALUE
1.3	Drive			Electric
1.4	Operator type			Standing
1.5	Rated capacity	Q	kg	1500
1.6	Load centre distance	c	mm	600
1.8	Load distance, centre of drive axle to fork	x	mm	500
1.9	Wheelbase	y	mm	1504
2.1	Service weight		kg	2370
2.2	Axle loading, laden front/rear		kg	3445/490
2.3	Axle loading, unladen front/rear		kg	1621/846
3.1	Tyres			Polyurethane
3.2	Tyre size, front		mm	Φ260×105
3.3	Tyre size, rear		mm	Φ254×114
3.4	Additional wheels (castor wheels)		mm	Φ178×73
3.5	Wheels, number front/rear (x=drive wheels)			1x/2
3.6	Tread width, front	b ₁₀	mm	700
3.7	Tread width, rear	b ₁₁	mm	974
4.1	Tilt of mast/fork carriage forward/backward		°	2/4
4.2	Height, mast lowered	h ₁	mm	2050
4.4	Lift	h ₃	mm	3000
4.5	Height, mast extended	h ₄	mm	3860
4.7	Height of overhead guard (cabin)	h ₆	mm	2255
4.8	Seat height relating to SIP/stand height	h ₇	mm	335
4.10	Height of wheel arms		mm	280
4.19	Overall length	l ₁	mm	2335
4.20	Length to face of forks	l ₂	mm	1265
4.21	Overall width	b ₁ /b ₂	mm	1090
4.22	Fork dimensions	s/e/l	mm	40/100/1070
4.23	Fork carriage ISO 2328, class/type A, B			2A
4.24	Fork carriage width		mm	830
4.25	Distance between fork-arms	b ₅	mm	200-620
4.26	Distance between wheel arms/loading surfaces			750
4.31	Ground clearance, laden, below mast		mm	70
4.32	Ground clearance, centre of wheelbase	m ₂	mm	70
4.34.1	Aisle width for pallets 1000×1200 crossways	A _{st}	mm	2745

	SPECIFICATION	REF	UNIT	VALUE
4.34.2	Aisle width for pallets 800 × 1200 lengthways	Ast	mm	2770
4.35	Turning radius	Wa	mm	1765
5.1	Travel speed, laden/unladen		km/h	8.5/9
5.2	Lift speed, laden/unladen		m/s	0.28/0.44
5.3	Lowering speed, laden/unladen		m/s	0.52/0.48
5.8	Max. gradeability, laden/unladen		%	8/10
5.10	Service brake			Electromagnetic
5.11	Parking brake			Electromagnetic
6.1	Drive motor rating S2 60 min		kW	4
6.2	Lift motor rating at S3 15%		kW	8.2
6.4	Battery nominal capacity K5		Ah	420
6.4	Battery voltage		V	48
6.4.1	Battery type			Li-Ion/AGM
6.5	Battery weight		kg	739
6.6	Energy consumption according to DIN EN 16796		kWh/h	0.28
8.1	Type of drive unit			AC
10.5	Steering design			Electronic
10.7	Sound pressure level at the driver's seat		dB(A)	75
15.1	Charger output current		A	60

CQD15S RATED CAPACITIES GRAPH





Mast Options

MAST TYPE	LIFT HEIGHT (H3, MM)	MAST LOWERED HEIGHT (H1, MM)	MAST EXTENDED HEIGHT, NO BACKREST (H4, MM)	MAST EXTENDED HEIGHT, WITH BACKREST (H4, MM)	FREE LIFT HEIGHT, NO BACKREST (H2, MM)	FREE LIFT HEIGHT, WITH BACKREST (H2, MM)
2-Standard Mast	2700	1900	3266	3560	0	0
2-Standard Mast	3000	2050	3566	3860	0	0

MAST TYPE	LIFT HEIGHT (H3, MM)	MAST LOWERED HEIGHT (H1, MM)	MAST EXTENDED HEIGHT, NO BACKREST (H4, MM)	MAST EXTENDED HEIGHT, WITH BACKREST (H4, MM)	FREE LIFT HEIGHT, NO BACKREST (H2, MM)	FREE LIFT HEIGHT, WITH BACKREST (H2, MM)
2-Standard Mast	3300	2200	3866	4160	0	0
2-Standard Mast	3640	2370	4206	4500	0	0
2-Standard Mast	4000	2550	4566	4860	0	0
2-Standard Mast	4300	2700	4866	5160	0	0
3-Free Mast	4000	1930	4700	4860	1060	1060
3-Free Mast	4500	2100	5200	5360	1240	1240
3-Free Mast	5000	2270	5700	5860	1400	1400
3-Free Mast	5500	2440	6200	6360	1580	1580
3-Free Mast	6000	2610	6700	6860	1740	1740
3-Free Mast	6500	2780	7200	7360	1920	1920
3-Free Mast	7000	2950	7700	7860	2080	2080
3-Free Mast	7500	3120	8200	8360	2260	2260

Options

ITEM	OPTIONS (optional items marked in yellow)
Fork dimension	900*600 2A 100*40*1070 900*600 2A 100*40*920 900*600 2A 100*40*1150 900*600 2A 100*40*1220 900*600 2A 100*40*1370
Leg width	751
Fork carriage width option	620mm(Without sideshifter) 655mm(With sideshifter)
Backrest height	820mm(Without sideshifter) 995mm(With sideshifter)
Load wheel type	Single
Load wheel material	PU
Drive wheel material	PU
Battery capacity	420Ah 300Ah 450Ah 465Ah 260Ah-Li 360Ah-Li
Charger	48V-60A External 48V-50A External 48V-45A External
Attachments	No Built-in sideshifter
Water auto-filling system	No Yes and not customized

ITEM	OPTIONS (optional items marked in yellow)
Front lamp	LED
Rear lamp	No LED
Warning lamp	Yes and not customized
Area warning lamp	No Yes and not customized
Rearview mirror	Yes and not customized
Buzzer	No Yes and not customized
Camera	No Yes and not customized
Fire extinguisher	No Yes and not customized
Telematics	No Yes and not customized
Cold storage	No Yes and not customized
Forks tilt forward and backward	No Yes and not customized
Overhead guard	Yes Yes and can be customized (Drive-in)
Battery side pull attachment	No Side pull bracket