




# CQD25RVF

## ELECTRIC REACH TRUCK 2.5T

 2500 kg
  12500 mm
  48 V Lead Acid



The CQD25RV(F) is perfectly suited for large distribution centers, logistics hubs, and high-bay warehouses requiring heavy-duty performance. With a maximum lift height of 12.5 m and the ability to retain full rated capacity at 6.5 m, it ensures both productivity and safety. The compact chassis and 1960 mm turning radius allow it to maneuver in narrow aisles, while features like LED lighting, proportional hydraulics, and optional cold storage adaptations extend its versatility to challenging environments

SPECIFICATION	REF	UNIT	VALUE
Battery type			Lead Acid
Battery nominal capacity K5		Ah	700
Battery voltage		V	48
Rated capacity	Q	kg	2500
Load centre distance	c	mm	600
Service weight		kg	4620
Height, mast lowered	$h_1$	mm	4820
Lift	$h_3$	mm	12000
Height, mast extended	$h_4$	mm	13065
Overall length	$l_1$	mm	2586
Overall width	$b_1/b_2$	mm	1345
Length to face of forks	$l_2$	mm	1521
Fork dimensions	s/e/l	mm	40/120/1070
Turning radius	Wa	mm	1960
Manufacturer			CQD25RVF
Model designation			FORX

# Features

## High lift performance with stability

The CQD25RV(F) reaches lift heights of up to 12.5 m, while maintaining full carrying capacity up to 6.5 m. Its reinforced mast ensures stability under heavy loads, making it suitable for high-rack storage and demanding warehouse operations.



## Powerful and durable battery system

Equipped with a standard 48V/700Ah lead-acid battery, the truck offers long runtime for heavy-duty use. Optional upgrades to 750Ah and 775Ah provide even more endurance, while external chargers ensure efficient energy management

## Operator-focused design

A suspension seat, ergonomic controls, and a multifunctional full-color display give operators comfort and control throughout long shifts. Features like electronic steering and proportional lifting provide smooth handling and precise pallet placement





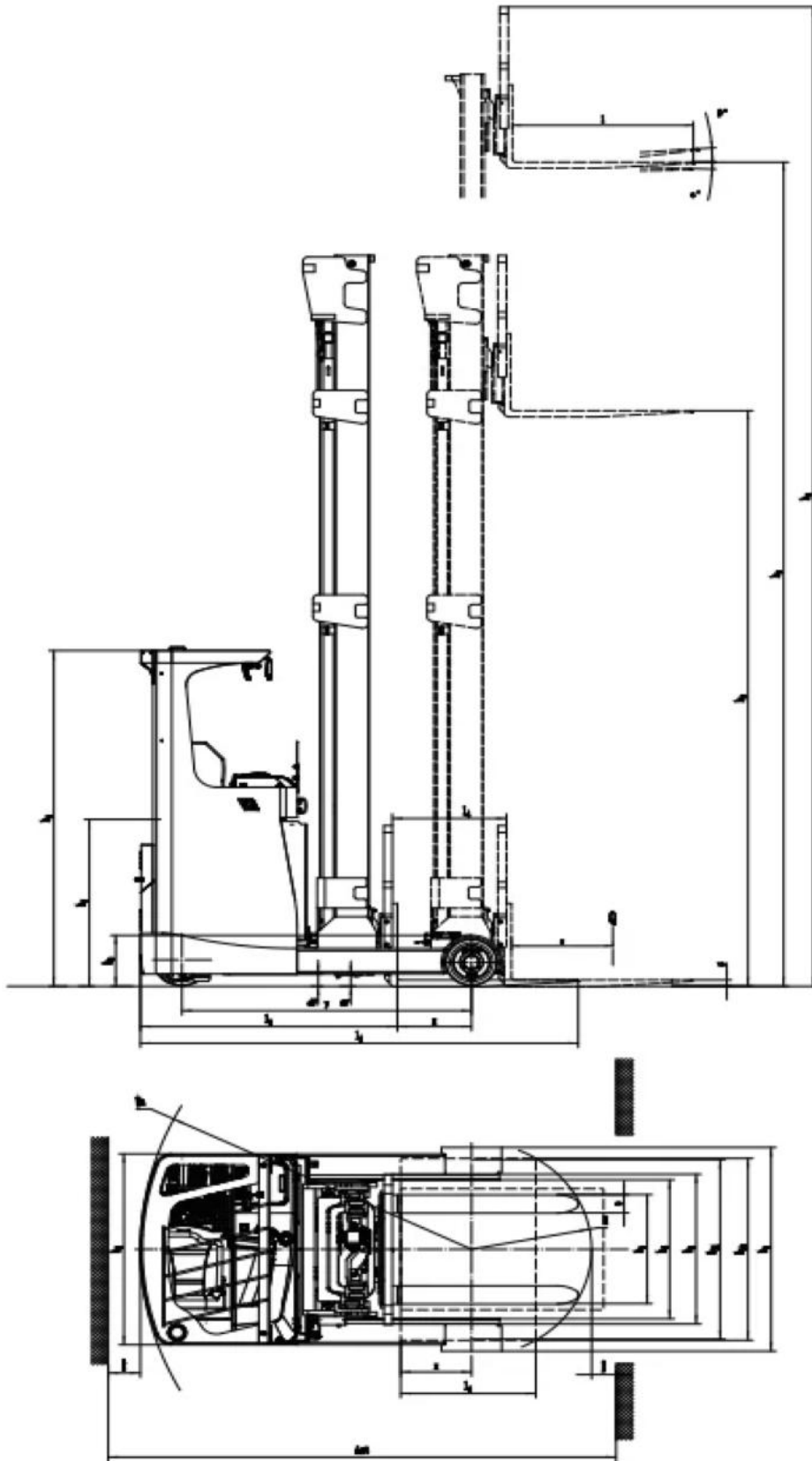
## Advanced safety and efficiency features

The CQD25RV(F) is equipped with LED lighting for low-visibility areas, electromagnetic brakes, height indicator, OPS operator presence system, and optional add-ons like cameras or remote monitoring. These features improve both safety and overall operational efficiency

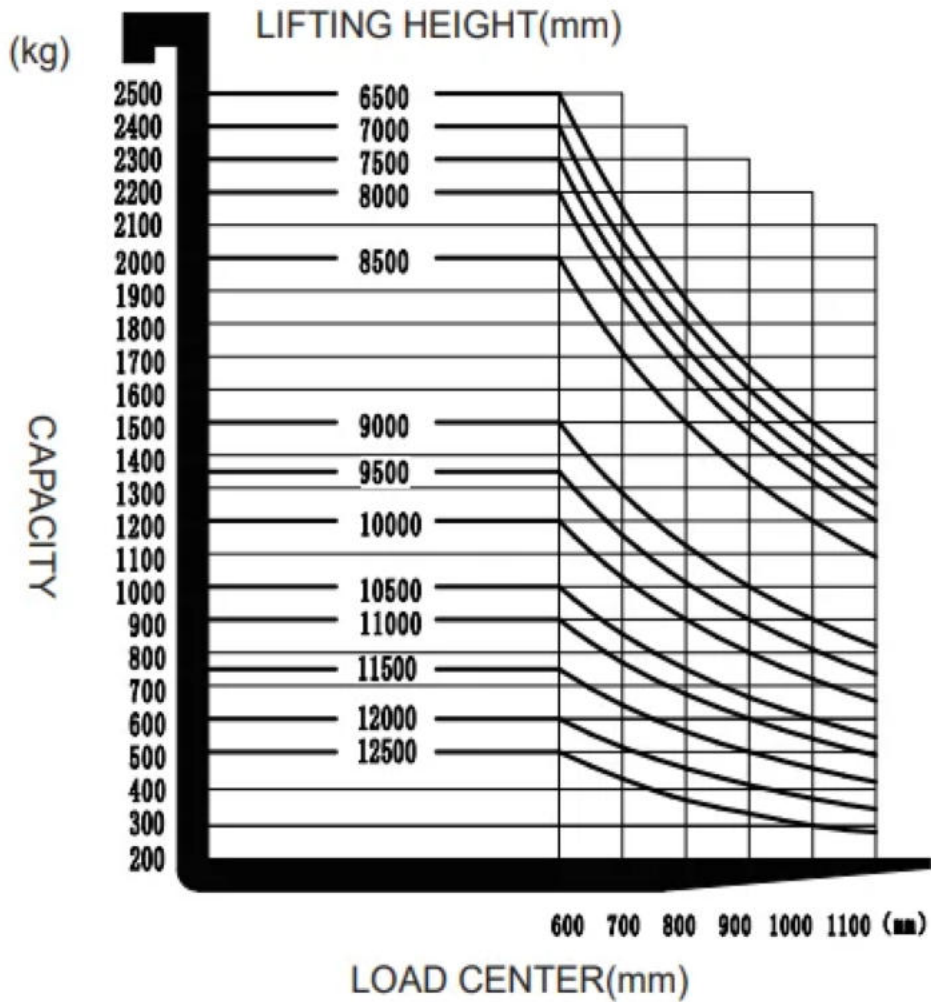
## VDI Chart

	SPECIFICATION	REF	UNIT	VALUE
1.1	Manufacturer			CQD25RVF
1.2	Model designation			FORX
1.3	Drive			Electric
1.4	Operator type			Seated
1.5	Rated capacity	Q	kg	2500
1.6	Load centre distance	c	mm	600
1.8	Load distance, centre of drive axle to fork	x	mm	439
1.9	Wheelbase	y	mm	1714
2.1	Service weight		kg	4620
2.2	Axle loading, laden front/rear		kg	650/6470
2.3	Axle loading, unladen front/rear		kg	2710/1860
3.1	Tyres			Polyurethane
3.2	Tyre size, front		mm	Φ343×140
3.3	Tyre size, rear		mm	Φ310×135
3.4	Additional wheels (castor wheels)		mm	Φ102×51
3.5	Wheels, number front/rear (x=drive wheels)			1x/2
3.7	Tread width, rear	b <sub>11</sub>	mm	1186
4.1	Tilt of mast/fork carriage forward/backward		°	2/4
4.2	Height, mast lowered	h <sub>1</sub>	mm	4820
4.3	Free lift	h <sub>2</sub>	mm	3252
4.4	Lift	h <sub>3</sub>	mm	12000
4.5	Height, mast extended	h <sub>4</sub>	mm	13065
4.7	Height of overhead guard (cabin)		mm	2213

	SPECIFICATION	REF	UNIT	VALUE
4.8	Seat height relating to SIP/stand height		mm	1145
4.10	Height of wheel arms		mm	333
4.19	Overall length	$l_1$	mm	2586
4.20	Length to face of forks	$l_2$	mm	1521
4.21	Overall width	$b_1/b_2$	mm	1345
4.22	Fork dimensions	s/e/l	mm	40/120/1070
4.23	Fork carriage ISO 2328, class/type A, B			2A
4.24	Fork carriage width		mm	990
4.26	Distance between wheel arms/loading surfaces			915
4.31	Ground clearance, laden, below mast		mm	60
4.32	Ground clearance, centre of wheelbase	$m_2$	mm	70
4.34.1	Aisle width for pallets 1000×1200 crossways	Ast	mm	2871
4.34.2	Aisle width for pallets 800 × 1200 lengthways	Ast	mm	3037
4.35	Turning radius	wa	mm	1960
5.1	Travel speed, laden/unladen		km/h	9/9.5
5.2	Lift speed, laden/unladen		m/s	0.3/0.35
5.3	Lowering speed, laden/unladen		m/s	0.4/0.3
5.8	Max. gradeability, laden/unladen		%	7/14
5.10	Service brake			Electromagnetic
5.11	Parking brake			Electromagnetic
6.1	Drive motor rating S2 60 min		kW	6.4
6.2	Lift motor rating at S3 15%		kW	13
6.4	Battery nominal capacity K5		Ah	700
6.4	Battery voltage		V	48
6.4.1	Battery type			Lead Acid
6.5	Battery weight		kg	1115
8.1	Type of drive unit			AC
10.5	Steering design			Electronic
10.7	Sound pressure level at the driver's seat		dB(A)	70
15.1	Charger output current		A	100



## RATED CAPACITIES GRAPH



## Options

ITEM	OPTIONS (optional items marked in yellow)
Fork dimension	1000*600 2A 122*40*920   1000*600 2A 122*40*1070   1000*600 2A 122*40*1150   1000*600 2A 122*40*1220   1000*600 2A 122*40*1370   1000*600 2A 122*40*1500   1000*600 2A 122*40*1600
Leg width	917
Fork carriage width option	770mm
Backrest height	1025mm
Load wheel type	Single
Load wheel material	PU
Drive wheel material	PU
Battery capacity	700Ah   750Ah   775Ah

ITEM	OPTIONS (optional items marked in yellow)
Charger	48V-100A External   48V-80A External
Seat type	Suspension
Attachments	Built-in sideshifter
Castor wheels	Yes and not customized
Water auto-filling system	No   Yes and not customized
Warning lamp	Yes and not customized
Area warning lamp	No   Yes and not customized
Rearview mirror	Yes and not customized
Camera	No   Yes and not customized
Fire extinguisher	No   Yes and not customized
OPS system	No   Yes and not customized
Battery side pull function	No   Yes and not customized
Cold storage	No   Yes and not customized
Forks tilt forward and backward	Yes and not customized
Overhead guard	Yes   Yes and not customized (Drive-in)
Battery side pull attachment	No   Battery trolley   Side pull bracket