

FORX

ENERGY ADVANCE CO., LTD

77/7 SOI SUWINTHAWONG 33, LUMPAKCHEE,
NONG CHOK , BANGKOK 10530

SERVICE@ENERGYADVANCE.CO.TH
WWW.FORX.CO.TH



LINE OA : @FORX



A series pallet truck mini range III

with capacities of 1,500/2,000kg

FORX

A series pallet truck mini range III

The A series pallet truck mini range III has been engineered to be both powerful and flexible to meet the requirements of many demanding applications. Whether it's supermarket work, delivery service, stock replenishment or heavy manufacturing, the A series pallet truck mini range III has the strength and durability to minimise your total cost of ownership.



Easy/ Efficiency/ Economy

Appearance

- / A series pallet truck mini range III applied professional industrial design, stream lines, and compact, and fully ergonomic consideration, in line with the latest design trends.
- / Applied steel stamping and injection molding processes, which is robust, durable, and also environmental compliance.

High Performance

- / Rated capacity 1500-2000kg, meet the needs of the majority of customers.
- / Powered by traction motor not only has good acceleration and perfect performance, but also low heat.
- / Regenerative braking for battery recovery during travel speed reduction, anti-slope on gradient.
- / All key parts such as tiller, switches, connectors, battery indicator and hour meter all adopt the famous brand.

Comfort

- / Make the operator feel comfortable, all the operation can be completed by one hand.
- / Optimized designing structure to offer a good visibility and easy entrance of the pallet.
- / Built-in charger and maintenance free gel battery adopted to provide convenient usage.
- / The compact body and semicircular design provide an ideal operation in limited space, and the ability of walking upright greatly increases the convenience in the container.
- / Standard fork height 80mm, equipped the guide device easy to get in pallets (including sealing pallets).
- / Side battery change is standard feature.

Reliability

- / 5-pivot design provide longer working life.
- / Imported waterproof connectors, all wires and cables are protected, greatly improve the reliability of the electric system.
- / Top quality hydraulic power unit applied to provide low noise, low vibration, smooth lifting and landing reliable operation.
- / Punch formed forks to provide more strength and tip guide to provide higher efficient operation.
- / Using non-contact proximity switch, improves safety and reliability.

Safety

- / Three braking system of regenerative braking, reverse current braking, parking brake, insures the safe operation.
- / Anti-slope on gradient can keep the safety.
- / The emergency button on the tiller head can effectively avoid the harm to the driver.
- / The standard equipped electronic lifting limitation protect the pump motor from damaging dramatically and more energy saving.

Maintenance

- / Built-in charger and maintenance free gel battery, you don't need to worry about them.
- / Integrated battery indicator, hour meter and self-diagnostic instrument.
- / Full opened hood, easy accessibility of all components, is easy for service.
- / All shafts installed lubricated shaft sleeve and oil cup, provide convenient maintenance and long service life.

Standard specification

- / Permanent magnet drive motor
- / Emergency switch
- / Multi-function battery indicator
- / PU wheel
- / 1150mm fork length
- / 550mm outside fork width
- / Electronic lifting limitation
- / Non-contact proximity switch
- / Horn
- / Maintenance free battery
- / Internal charger
- / Walking upright
- / Additional wheel
- / Tandem load wheel

Options

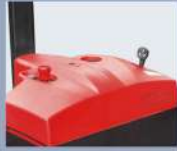
- / Different length of fork
- / Different width of outside fork
- / Single load wheel



The ergonomic tiller head allows for easy operation with one hand.



Auxiliary wheels are equipped to have better stability.



Modern outline design.



Tandem load wheels.

A series Mini Range pallet truck III specification

		HANGCHA GROUP CO.,LTD.		
Dimensioning	1.1	Manufacturer		
	1.2	Manufacturer's type designation	CB01S-A3M2*	CB01S-A3M2*
	1.4	Operator type: hand, pedestrian, standing, seated, order-picker	Pedestrian	Pedestrian
	1.5	Rated capacity/rated load	1500	1500
Weight	1.6	Load centre distance	600	600
	1.8	Load distance, centre of drive axle to fork	950	950
	1.9	Wheelbase	1225 ¹⁾	1225 ¹⁾
	2.1	Service weight(including battery)	220	220
		Battery weight	52	52
Tyres, chassis	3.1	Tyres: solid rubber, superelastic, pneumatic, polyurethane	PU	PU
	3.2	Type size, front	ø210x70	ø210x70
	3.3	Type size, rear	ø80x54	ø80x54
	3.4	Additional wheel (dimensions)	ø70x40	ø70x40
	3.5	Wheels, number front / rear (x = driven wheels)	1x/2/4	1x/2/4
	3.6	Tread, front	404	404
	3.7	Tread, rear	400	400
Dimensions	4.4	Lift	120	120
	4.15	Fork height, lowered	80	80
	4.18	Overall length	1559	1559
	4.21	Overall width	558	558
	4.22	Fork dimensions	50/160/1150	50/160/1150
	4.25	Distance between fork-arms	500/600	500/600
	4.32	Ground clearance, centre of wheelbase	30	30
	4.34.1	Alake width for pallets 1000 x 1200 crossways	1850 ²⁾	1850 ²⁾
	4.34.2	Alake width for pallets 800 x 1200 lengthways	1900 ²⁾	1900 ²⁾
	4.35	Turning radius	1400 ³⁾	1400 ³⁾
Performance data	5.1	Travel speed, laden/unladen	4.5/4.8	4.5/4.8
	5.2	Lift speed, laden/unladen	0.05/0.06	0.05/0.06
	5.3	Lowering speed, laden/unladen	0.045/0.04	0.045/0.04
	5.8	Max Gradeability, laden/unladen	6/15	6/15
	6.1	Drive motor rating S2 60 min	0.65	0.65
	6.2	Lift motor rating at S3 15%	0.8	0.8
	6.4	Battery voltage/rated capacity	24/85	24/100
	8.1	Type of drive control	DC	DC

Note: 1) V0: ±150mm 2) V0: ±200mm 3) When fork lowered +60mm

* CC model

